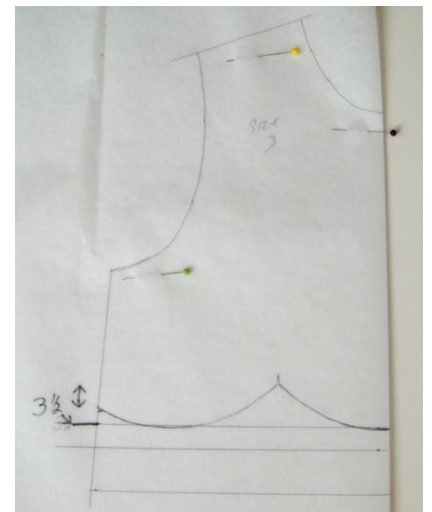
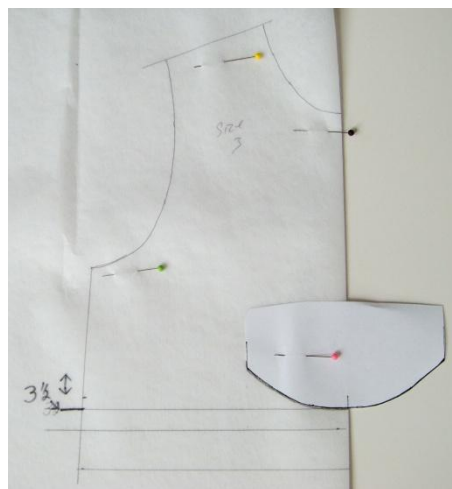
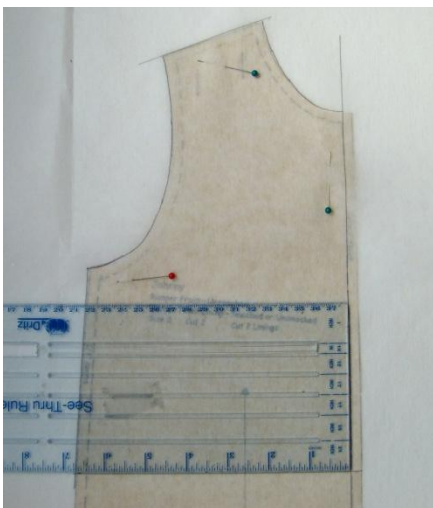


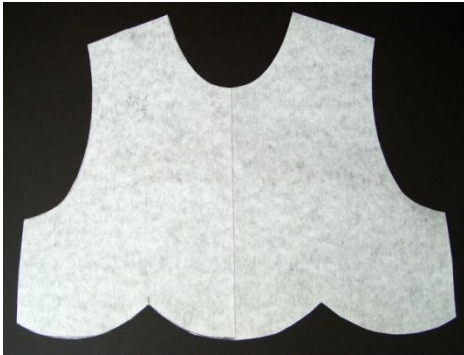
Scallop Overlay

I will give two different methods of doing this. Both methods work best with lighter weight fabrics, especially for the linings. Scallop pattern piece is at the end of the directions. Not all printers may print the scallop pattern piece true to size. The piece should be about 5" from edge to edge. So when you print it out, you may have to adjust the size of your printed pattern.

Three Scallops:

- You will be using your favorite romper or jumper pattern. Take a piece of light weight, see through interfacing large enough to accommodate the final width of romper, plus some, & deep enough to go at least 5" below the armhole edge.
- Lay this block on top of your pattern & trace the center front line (NOT THE CUTTING LINE) as well as the shoulder, armhole, neck & part of the side seam. Remove from pattern & fold in half on your center front line. (If your pattern does not have a straight center front line, you will need to flip pattern & trace other side.)
- Make a mark 3 ½" down from armhole seam, place straight end of ruler on center front line & match the straight length of ruler to the mark at armhole edge & draw a straight line across interfacing pattern. You can have your line a little shorter or longer, depending on the size of your appliqué, but do not go too much longer, as it may go deeper than the waist line.
- Match center of scallop line to the center front line of overlay & draw middle scallop. Make a mark at the sides of this scallop (this is where you will be placing scallop pattern piece for next scallop). Move pattern over, matching bottom edge & side mark, draw next scallop.
- With interfacing still on fold, cut out your pattern piece. You will now have 3 scallops.
- Take a block of material for your overlay, & do your appliqué on this piece, paying attention that you are placing it where you can center & cut out the scalloped overlay. It is a good thing to have your block of material oversized to allow for error.
- Cut out your overlay using your pattern you made. This is why it is good to use a see through interfacing, so you can see that you're placing it properly over your appliqué. Cut out the lining also.
- With right sides together, stitch overlay & lining together across bottom of the scallops only. I like to move my needle position over 1 or 2 stitches & sew a second row of stitching close to the first row. Trim close to stitching. Turn & press well. You can also use piping or trim on the scallops.
- Baste the rest of the edges together. Place this on top of your romper or jumper front & baste all of the layers together. It is now treated as one.
- Continue putting romper or jumper together as usual.





NOTE: If you do not want to line the whole overlay, you can make a facing to follow the same shape as the edge of the scallops. Make a separate pattern piece using the same edge as the overlay, & the top edge of this a straight line approximately 2 ¾ - 3 " up from center of scallop. In other words, you will have the scallops at one edge & a straight edge above this, forming a facing piece. This would eliminate some bulk in the neck, armholes, & shoulders. (you will have 2 pattern pieces, one full piece as photo # 4, & then the facing piece)

Machine Scallops:

- This works only if you have a machine that has a built in scallop stitch. You will need to make several samples, making adjustments until you find a setting that you like. I suggest that you write your settings down on each sample so you do not forget them. You want a machine scallop that is more narrow than wide in its satin stitching & not a tight stitch, as you will be turning it to the wrong side. If you have a machine scallop stitch that is just a straight stitch, this works also, even better if you can use a twin needle for the stitching. Most machines will let you adjust the length of the scallops.
- Make a pattern piece for your overlay using the same method as above, but keeping the bottom straight. You will not be tracing or cutting out the scallops, as you will be doing a machine set scallop.
- Do your appliqué on a block of fabric that is larger than your finished pattern. When appliqué is finished, lay your overlay pattern on it, checking that it is centered & draw a straight line across the bottom where you want your finished scallops to be. This will be your guide line for sewing the scallops.
- Cut a block of lining the same size as your overlay block. With right sides together, pin the two pieces together at your drawn line & sew the machine scallops.
- Trim close to the scallops & turn & press. It is helpful to "roll" the edges between your fingers before pressing.
- Lay your overlay pattern back on this, centering & placing the edge where you want it & cut out the overlay.
- Baste the rest of the edges together & then baste this to your front of romper or jumper. It is now treated as one piece. Finish sewing the usual way.

